

# The Grand California Brochure



Commercial  
Vehicles

*The Grand California.*

## **GRAND FREEDOM.**

The California has embodied freedom and adventure for generations. In the Grand California, you can take freedom to the next level. With its high level of ride comfort, top class workmanship and premium equipment, it's perfect for even the longest journeys. Grand California 600 comes with a full wet room, a kitchen area, rear bed and loft bed— meaning you can now enjoy a holiday in every corner of the globe.



*The Grand California 600.*  
**GRAND HOLIDAYS.**

The Grand California 600 is the ideal size for a wonderful extended family holiday. With a length of 6.00m and height of 2.97m, it is also compact enough for small camp sites, while also big enough for a family of four with two children. This is thanks to the optional over-cab bed for the little ones.



Illustrations include options at extra cost.

» The Grand California 600

Range. Comfort. Traction.  
**GRAND TOUR.**



**Powerful diesel engine with front-wheel drive** (not illustrated).  
The powerful 177 PS diesel engine with 410 Nm of torque, combined with an 8-speed automatic gearbox has been designed to make effortless progress. Its modern design ensures a refined driving experience and smooth power delivery.

**The standard 8-speed automatic gearbox** (not illustrated).  
The high torque in the Grand California is transferred to the wheels without almost any interruption of the tractive force. This allows for convenient, fuel-efficient driving, even in stop-and-go urban traffic.

Illustration includes options at extra cost.

Look forwards. Recognise. Assist.


# GRAND PROSPECTS.



Illustration includes options at extra charge.  
Please contact your local Volkswagen Commercial Vehicles California Centre for details of the standard equipment and optional extras available.




Front Assist with City Emergency Braking System.

 **Front Assist with City Emergency Braking System.**  
Standard on the Grand California, this detects critical distances, warns of hazardous situations and when necessary, triggers emergency braking.



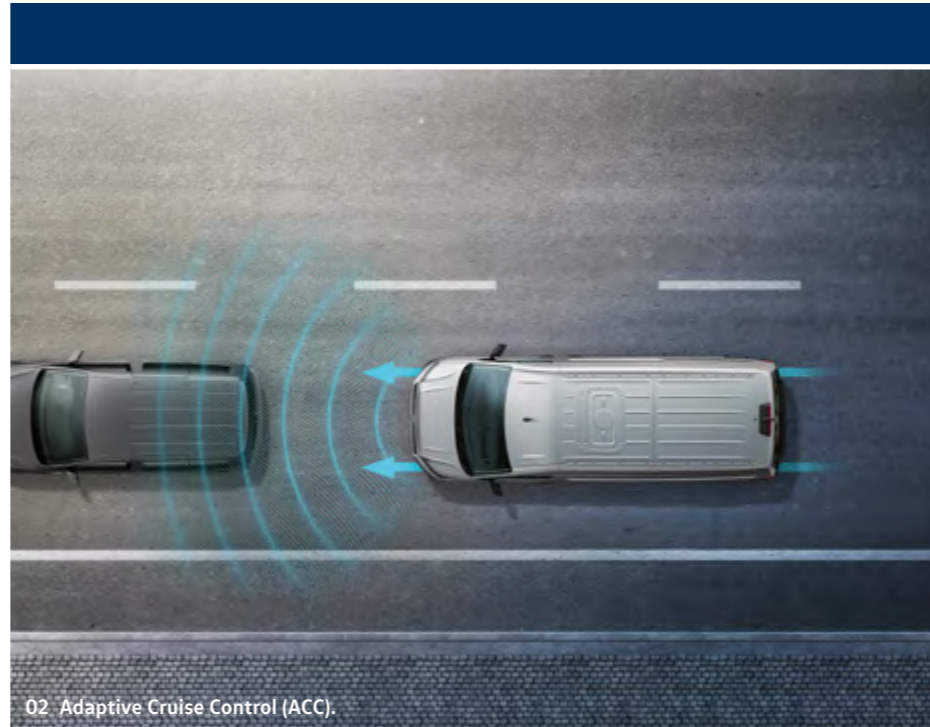
Crosswind Assist.

 **Crosswind Assist.**  
As part of the Electronic Stabilisation Programme (ESP), the standard Crosswind Assist applies adaptive braking intervention when the vehicle encounters a strong crosswind.

Images shown are for illustration purposes only and may not necessarily reflect ROI specification.



01 Automatic Post-Collision Braking System.



02 Adaptive Cruise Control (ACC).

**(MCB) 01 Automatic Post-Collision Braking System.**  
Fitted as standard, the Automatic Post-Collision Braking System triggers braking after a collision, with the aim of preventing secondary collisions.

**02 Adaptive Cruise Control (ACC).**  
Fitted as standard, the ACC uses a front radar to measure the distance (up to 120 metres) and speed relative to vehicles driving ahead. It automatically regulates the pre-set distance. ACC also includes the Front Assist with City Emergency Braking System. This detects critical distances, warns of hazardous situations and when necessary, a speed of up to 18mph triggers emergency braking.

**P/A 03 Side protection (not illustrated).**  
Available as standard, Side protection monitors the vehicle's sides and alerts you with visual and audible warnings if you're getting too close to other vehicles, pillars, walls or pedestrians.

**/\ 03 Lane Keeping Assist.<sup>1</sup>**  
Available as standard, Lane Keeping Assist countersteers the vehicle if the driver unintentionally drifts from a lane. The system also emits audible and visual warnings via the multi-function display to alert the driver of danger.



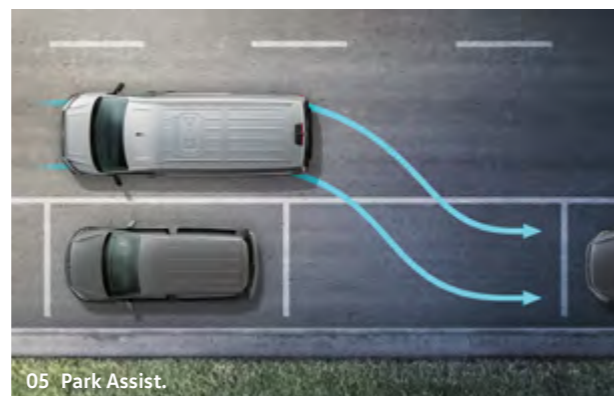
03 Lane Keeping Assist.



04 Rear Traffic Alert.

**04 Rear Traffic Alert.**  
Available as standard, Rear Traffic Alert helps by emitting an audible warning when reversing out of a parking space if another vehicle is getting too close. If the driver fails to respond, the system intervenes and applies braking to help avoid a collision.

**P/05 05 Park Assist.**  
This useful option aids positioning into parking spaces. When reverse is engaged, the vehicle assumes control of the steering. All that's required of the driver is to operate the accelerator and brake pedals, whilst keeping a good lookout.



05 Park Assist.



06 Light Assist.

**06 Light Assist high-beam assistant.**  
This practical option automatically dips the headlights when it detects oncoming vehicles, or vehicles travelling ahead, to prevent other drivers from becoming dazzled. The system automatically switches on the high-beam headlights when the vehicle is travelling above 37mph in darkness.

1 Within the system's thresholds.

Please contact your local Volkswagen Commercial Vehicles California Centre for details of the standard equipment and optional extras available.

Images shown are for illustration purposes only and may not necessarily reflect ROI specification.



**Electromechanical Servotronic steering.**

Fitted as standard, Electromechanical Servotronic steering provides a speed-sensitive operation with active return. This improves the steering feel around the mid-point, providing improved levels of steering precision.



**Electronic Stabilisation Programme (ESP).**

Fitted as standard, ESP is designed to prevent the vehicle from swerving in critical driving conditions by controlled and targeted intervention in the brakes and engine management system. This helps to maximise directional stability.



**Rear-view camera.<sup>1</sup>**

Simplifies parking by showing a limited view of the area behind the vehicle on the display of the radio or navigation system. Additional guidelines help the driver manoeuvre into the space. Optional on all models.



**Cruise control.**

At 18mph and above, the system maintains your chosen preset speed through uphill and downhill inclines. Standard on all models.



**Tyre pressure monitoring system.<sup>1</sup>**

Displays the current pressure for every tyre and warns of deviations from the set pressure. Optional on all models.



**Driver Alert System.<sup>1</sup>**

Uses visual and audible warning signals to recommend that the driver takes a break as soon as it registers driving behaviour that indicates tiredness. Standard on all models.



**Road Sign Display.**

Detects road signs and informs the driver about the current traffic situation. Optional on all models.



**Fog lights with cornering function.**

Ensures optimum visibility in poor weather conditions and illuminates the roadside when turning. Standard on all models.



**Hill Start Assist.**

This prevents the vehicle from rolling back on inclines, making it easier to start off on uphill slopes. Standard on all models.



**Lane Change Assist – Side Scan.<sup>1</sup>**

Side Scan displays a warning signal on the exterior mirror as soon as one of its sensors detects a vehicle in a blind spot during a lane change. Optional on all models.



**Anti-lock braking system (ABS).<sup>1</sup>**

Prevents wheels from locking up and, thus, maintains manoeuvrability. Standard on all models.



**Traction control system (ASR).**

Prevents wheelspin on poor or unstable surfaces.



**Electronic differential lock (EDL).**

Distributes the engine torque to the tyres with the greatest traction. Optional on 4MOTION.



**Driver's and front passenger's airbags.**

Provides the best possible protection in the event of a frontal impact as a standard feature. Side airbags are also available as an option.



**Seat belt warning.**

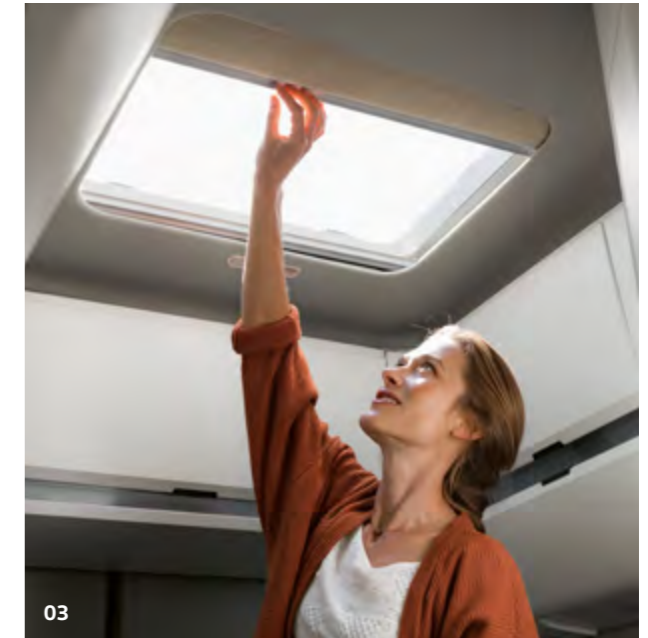
If their seat belt is not fastened, the seat belt warning reminds the driver to fasten it with a visual warning when the engine is started, and an audible warning after setting off. Standard on all models.



<sup>1</sup> Within the system's thresholds.

Illustration includes options at extra cost. Please contact your local Volkswagen Commercial Vehicles California Centre for details of the standard equipment and optional extras available.

Stow. Wash. Sleep.  
**GRAND DREAMS.**



» The cross-wise rear bed in the Grand California 600



Illustrations include options at extra cost.

04

**01 Easily accessible storage compartment in the rear.** There is plenty of space for storing luggage under the rear bed. Access via the rear wing doors is an extra-handly feature. Illustration shows the Grand California 680.

**02 Plate springs for a great night's sleep.** The plate springs offer the ideal level of comfort, regardless of what position you sleep in.

**03 Two large skylights (0.70m x 0.60m) with integrated mosquito nets and blinds.** There is one skylight above the rear bed and one at the front over the dining area.

**04 Cross-wise rear bed (1.93m\* x 1.36m) in the Grand California 600.** Comfort is just one of the great features of the compact rear bed. Thanks to the two-part load securing equipment, everything you need for your journey can be stowed securely under the bed while you are on the move. When folded up to the side, it also features a handy loading function.

\* Length measurements are subject to a tolerance of +/- 3.5cm.



01

» Practical wet room cabinet under the basin



**01 Fully equipped wet room with shower, toilet and a whole host of storage areas.** The wet room is sure to impress with its well thought-out functional design. For instance, the basin can be folded up while you are using the shower or toilet. All your bits and pieces are secured on the shelves to stop them from falling down. The folding mirror can be secured in place. The motion sensor switches on the indirect lighting and vanity lights automatically. There is also a quadruple storage solution for towels. And to protect the wet room from overflowing water, it comes with two drains including a dirt trap and odour trap.

» The optional over-cab bed with larger skylight in the Grand California 600



02

**02 Optional over-cab bed (1.60m–1.90m x 1.22m) with larger skylight (0.70m x 0.85m), aluminium ladder and two reading lights in the Grand California 600.**

It can hold up to 150kg of weight and ample space for two children. The slatted base can be pulled out at the touch of a button and the optional over-cab bed includes a larger skylight with mosquito nets and blinds.

**03 Camping windows with mosquito nets and pleated blinds.**

The camping windows can open wide to two positions for ventilation.



03

Illustrations include options at extra cost.



**01 Twin burner gas hob and sink with folding fittings.** The gas hob and sink can be used with flexibility thanks to the two-part glass cover. Illustration shows the Grand California 600.



01



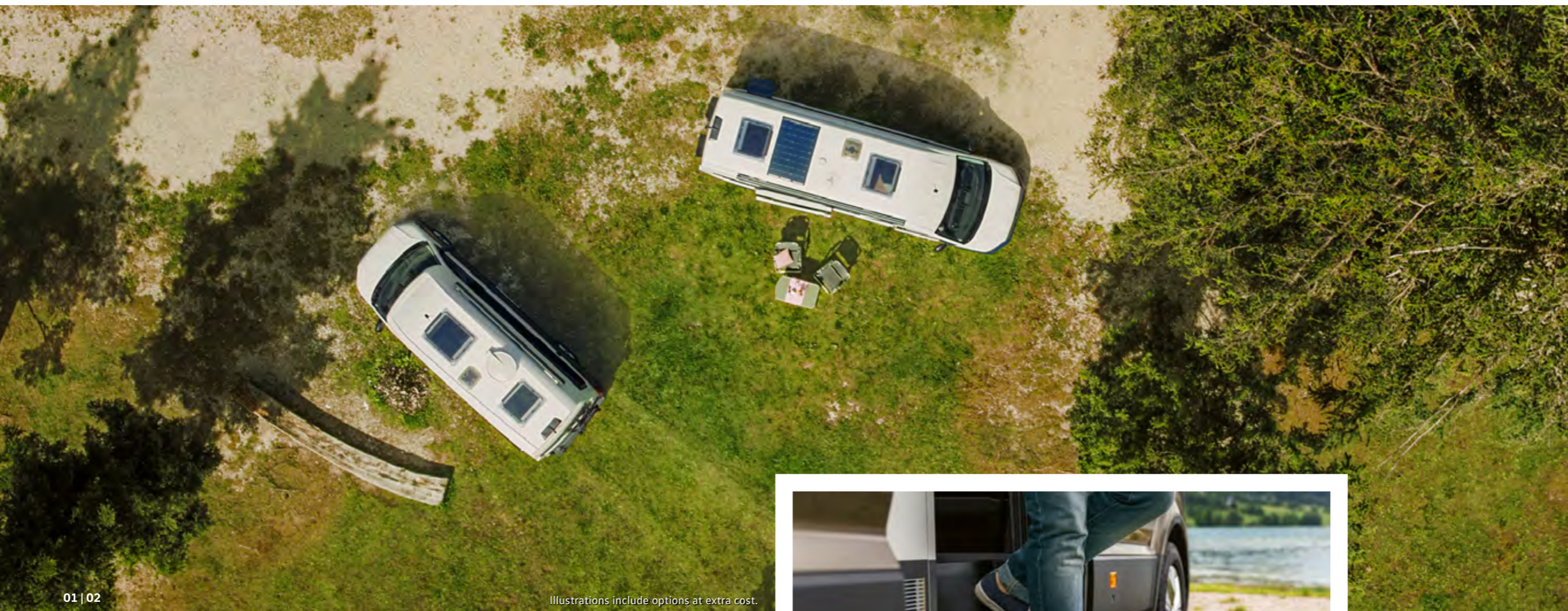
02

Illustrations include options at extra cost.

**02 Comfortable living and dining area with large table and four seats.** The seating options in the living area boast lots of space for eating and relaxing. The flexible table can be slid back to the seating bench's backrest and can be stowed in the rear bed area prior to your journey. Illustration shows the Grand California 680 (not available in ROI)

Heat. Control. Feel at home.

## GRAND ELECTRICS.



01 | 02

Illustrations include options at extra cost.

**01 Optional satellite system for TV reception.** The satellite aerial can be extended or retracted automatically.

**02 Optional solar panel on the vehicle roof.** The Grand California 600 comes with a 104W system at the front of the roof, while a 174W system is mounted in the middle of the roof on the Grand California 680. Both systems supply the second battery and help it to remain self-sufficient depending on how strong the sun is.

**Optional roof-mounted air conditioning system (2,200W cooling output)** (not illustrated). The lightweight, compact system is designed to be operated with an external source of power.

**03 Retractable step, electrically operated. An optional extra.** The step slides out automatically when the side sliding door is opened and retracts when the door is closed.

**Water- and air-based heater with gas and mains electric operation** (not illustrated). Five air vents evenly spread the warm air generated by the 6kW system throughout the interior. The system also stores 10 litres of warm water for the kitchen and wet room.

**Heating and water heating** (not illustrated). This can be optionally upgraded to run on diesel and electric. This means that only one gas bottle is needed which saves weight.



03

# STANDARD EQUIPMENT.

## Audio and communications.

- Discover Media navigation system with 10.4" touch-screen and DAB+ audio. USB interface, 4 speakers (2 tweeters and 2 woofers), multi-function display plus, Bluetooth®, voice control, Volkswagen Media Control and App-Connect.

## Cab area.

- Climatic manually controlled air conditioning with dust and pollen filter and air recirculation.
- Driver and passenger swivel seats with armrests, height and lumbar adjustment.
- Rear bench seat with two 3 point seat belts and Isofix.
- Rubber floor covering.
- Valley fabric seat covers (Palladium).
- 12V socket.

## Exterior.

- Electrically adjustable and heated door mirrors.
- Front and rear parking sensors.
- Manual side sliding door driver's side.
- 75 litre fuel tank with lockable cap.
- 180° rear wing doors.
- Black Awning
- Side marker lamps

## Safety and security.

- Adaptive Cruise Control (ACC).
- Anti-lock Braking System (ABS).
- Anti-theft alarm system – with interior monitoring, back-up horn and tow-away protection.
- Automatic hazard lights activation under emergency braking.
- Crosswind Assist.
- Driver's and front passenger's airbags.
- Driver Alert System.
- Electronic Brake Assist (EBA).
- Electronic Stabilisation Programme (ESP), load adjusting.
- Front Assist with City Emergency Braking System.
- Halogen main headlights with range control and daytime running function.
- Lane Keeping Assist.
- Remote central locking with 2 remote keys.
- Seat belt warning light for driver.
- Three-point inertia-reel seat belts for all seats.
- Tyre pressure warning system.
- Windscreen wiper with variable intermittent delay and wash-wipe system.

## Wheels and tyres.

- 17" Lismore alloy wheels 6½J x 17.
- 235/60 R17C 117/115 R tyres.
- Tyre mobility kit in lieu of spare wheel. Including 12V compressor and tyre sealant.



## Living area.

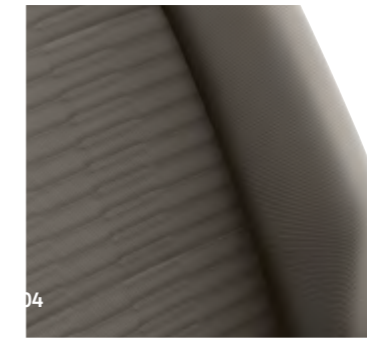
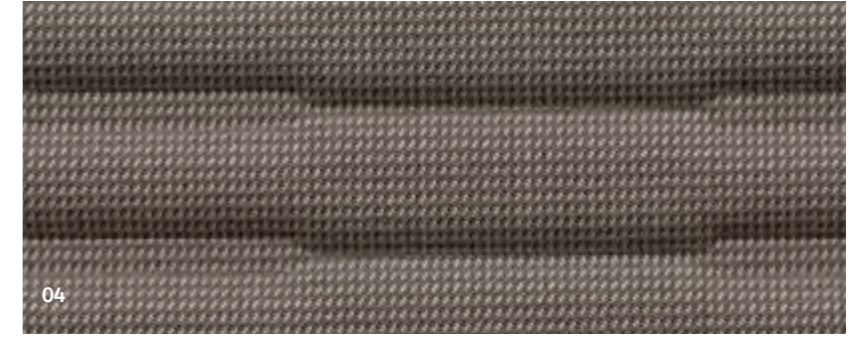
- Dinette with 4 seats and table.
- Heating and hot water heating powered by gas and mains electric.
- Sink with hot and cold water with folding tap.
- Central operating unit with touch control for monitoring heating, lighting and water levels.
- Folding chairs and table – stored in rear doors.
- Wet room with shower and cassette toilet.
- Two person rear bed – transverse on 600
- Gas storage cupboard for two bottles.
- Second battery – operating voltage 12V.
- Two sky lights with sliding blinds and fly screens.
- Windows with sliding blinds and fly screens.
- Multiple USB sockets in cab and living area.
- 4 x 230V electrical sockets.



Illustrations include options at extra cost.



# PAIN FINISHES, WHEELS AND SEAT UPHOLSTERY.



- 01 **Candy White.** Solid paint finish.
- 02 **Oyster Silver.** Optional metallic paint finish.
- 03 **Indium Grey** Optional metallic paint finish.
- 04 **'Valley' cloth seat upholstery** in Palladium.
- 05 **17" Lismore.** 17 x 6.5J alloy wheels with 235/65 R17 C tyres. Standard.

**Please note:** Not all paint and upholstery combinations can be ordered together and in some instances certain combinations may incur extra cost. Not all paint finishes may be available for every trimline. Please check details and availability with your Volkswagen California Centre at the time of ordering. Screen representations do not allow exact reproduction of paint, upholstery and trim colours. Images shown are for illustration purposes only and may not necessarily reflect ROI specification.

Detailed information regarding tyre efficiency labelling and technical specifications on all potential tyre fitments can be found by visiting the Volkswagen Commercial Vehicles online car configurator at [www.volkswagenvans.ie](http://www.volkswagenvans.ie)

## ENGINE & GEARBOX DATA.

### Engine specifications

### 2.0TDI 177PS

Mixture preparation/injection method	Common-rail/exhaust-gas turbocharger
EU exhaust emission standard	Euro 6d ISC-FCM
Number of Temp Evap cylinders	4
Cubic capacity	1,968cc
Output, PS at rpm	177 at 3,600
Torque, max. Nm at rpm	410 at 1,500-2,000
Fuel tank capacity	75 litres
AdBlue® tank capacity	18 litres
Diesel Particulate Filter [DPF]	●
8-speed automatic gearbox	●
Alternator <sup>1</sup>	180 A
Battery <sup>2</sup>	92 Ah

● Standard ○ Available - Not available

<sup>1</sup> Alternator rating depends on additional optional equipment fitted. <sup>2</sup> Battery rating depends on additional optional equipment fitted.

## FUEL CONSUMPTION, PERFORMANCE AND EMISSIONS.

Engine/transmission	Combined CO <sub>2</sub> emissions,g/km <sup>1</sup> , Max. (worst case)	Combined CO <sub>2</sub> emissions,g/km <sup>1</sup> , Min. (best case)	Combined fuel consumption mpg <sup>1</sup> , Min. (worst case)	Combined fuel consumption mpg <sup>1</sup> , Max. (best case)	Combined fuel consumption (ltr/100km) <sup>1</sup> , Max. (worst case)	Combined fuel consumption (ltr/100km) <sup>1</sup> , Min. (best case)	Top speed, mph (where law permits)
<b>Grand California 600</b>							
2.0TDI 177PS FWD 8-speed automatic 3.5T	311	284	23.7	26.2	11.9	10.8	101

<sup>1</sup> Figures shown are for comparability purposes; only compare fuel consumption and CO<sub>2</sub> figures with other vehicles tested to the same technical procedures. These figures may not reflect real life driving results, which will depend upon a number of factors including the accessories fitted (post-registration), variations in weather, driving styles and vehicle load. Data correct at 11.7.24. Figures quoted are for a range of configurations (including non-UK) and are subject to change due to ongoing approvals/changes. Please consult your authorised Volkswagen California Centre for further information.

# WEIGHTS.

Engine/transmission	Gross vehicle weight, kg	Axle load limit, front/rear, kg	Trailer weight braked 12%/unbraked, kg	Gross train weight, kg	Unladen weight <sup>1</sup> , kg	Payload <sup>2</sup> , kg
<b>Grand California 600</b>						
2.0TDI 177PS FWD 8-speed automatic	3,500	2,100 / 2,100	2,000 / 750	5,500	3,093	407

1 Unladen weight includes approximately 90% fuel load, 75kg for driver and 20kg for water.

2 Payload = gross vehicle weight minus unladen weight. Quoted weights are for vehicles with standard specification.

Unladen weight and payload may be influenced by factory options and California Centre fitted accessories.  
Trailer nose weight: 100kg.

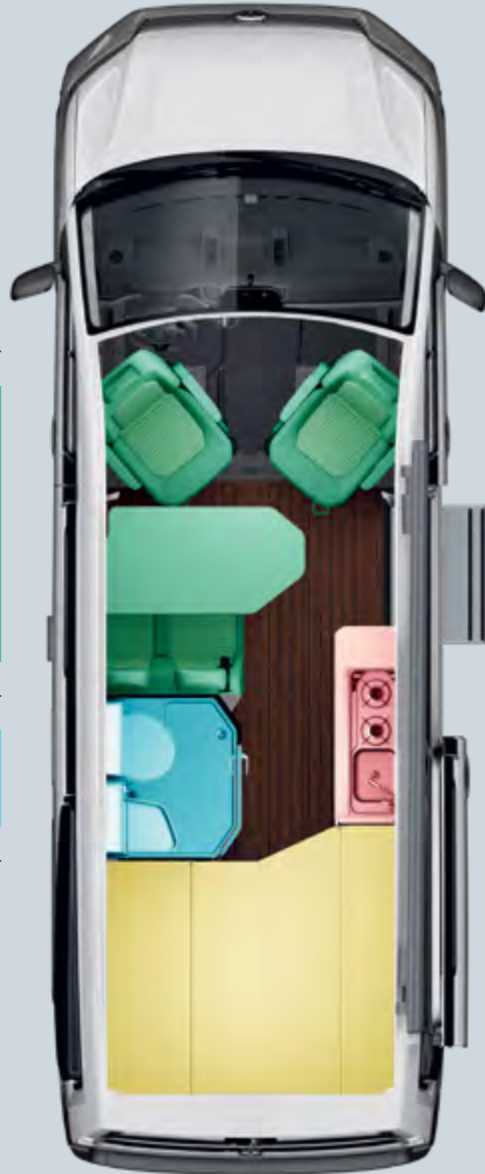


Dimensions. Seats. Weights.  
**GRAND SPACE.**

*The living areas in the  
Grand California 600.*

Number of seats: 4  
Standing height: 2.18m – 2.20m  
Table: 1.16m x 0.55m x 0.75m (L/W/H)  
Seat bench: 0.45m x 0.84m x 0.53m (L/W/H)

Wet room: 0.82m x 0.82m x 1.85m<sup>1</sup> (L/W/H)



Kitchen: 0.98m x 0.40m x 0.88m<sup>2</sup> (L/W/H)

Number of beds: 2, +2<sup>3</sup>  
Rear bed (cross-wise): 1.93m<sup>4</sup> x 1.36m  
Optional over-cab bed:  
1.60m x 1.22m left side,  
1.90m x 1.22m right side

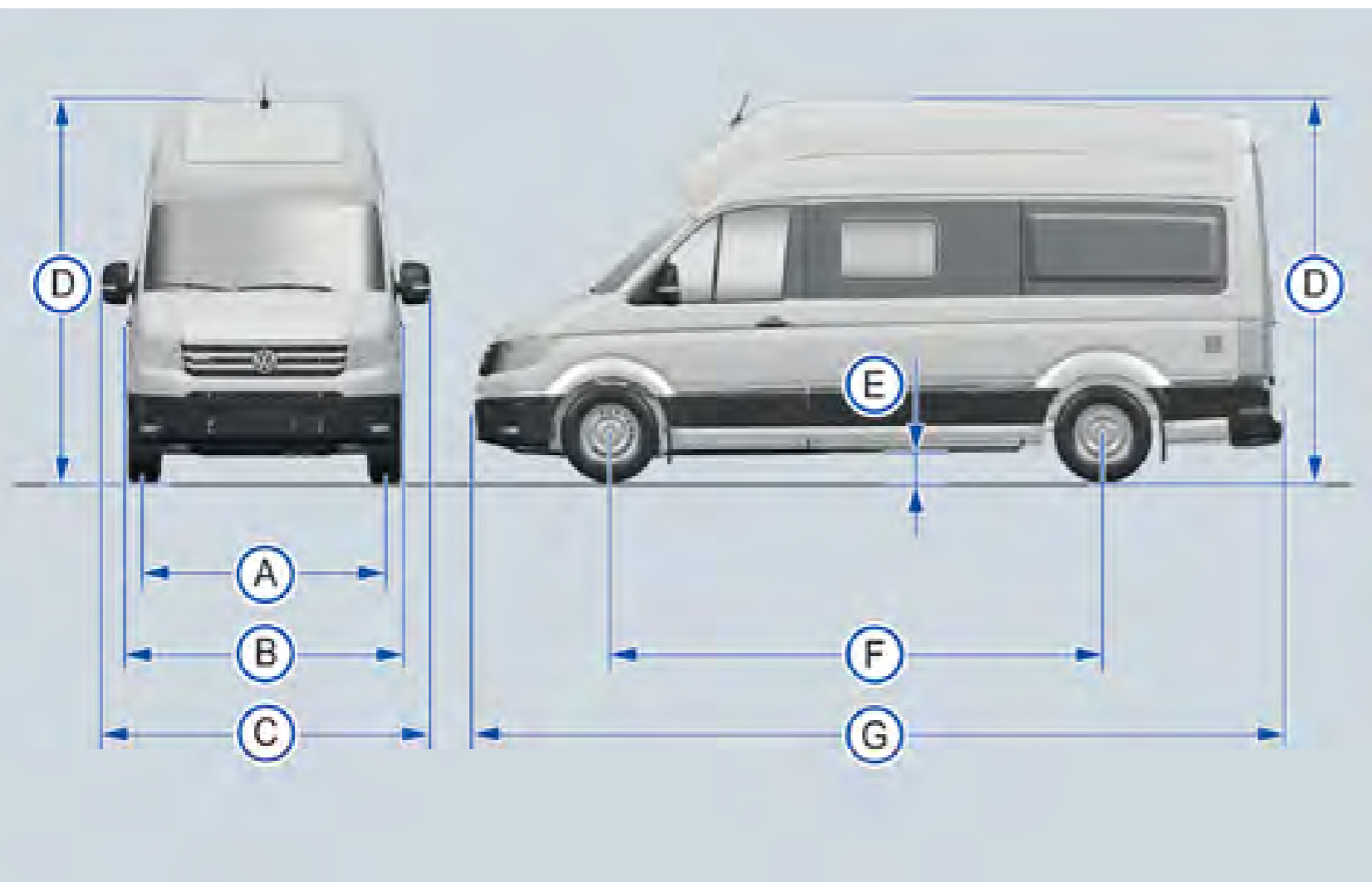


Exterior dimensions:  
Length: 5.98m  
Width: 2.04m<sup>5</sup>  
Height: 2.97m<sup>6</sup>  
Optional awning: 2.50m x 3.00m (L/W)

<sup>1</sup> Standing height in door frame. <sup>2</sup> Height of the work surface. <sup>3</sup> An over-cab bed is also available as an option.  
<sup>4</sup> Length measurements are subject to a tolerance of +/- 3.5 cm. <sup>5</sup> With exterior mirrors, the width is 2.41m. <sup>6</sup> Vehicle height when the skylight in the wet room is closed.  
Please contact your local Volkswagen Commercial Vehicles Tour Centre for details of the standard equipment and optional extras available.

## Exterior dimensions.

Grand California 600.



### Dimensions.

	Front track, mm	1,773
<b>A</b>	Rear track with front-wheel drive, mm	1,788
<b>B</b>	Width, mm	2,040
<b>C</b>	Width across the mirrors, mm	2,410
<b>D</b>	Height at kerb weight, mm	2,970*
<b>E</b>	Ground clearance between the axles when vehicle is ready to drive, mm	210
<b>F</b>	Wheelbase, mm	3,640
<b>G</b>	Vehicle length, mm	5,980
-	Turning circle diameter, m	13.6

\* With closed roof hatch.

## MODEL PRICES *(continued)*.

Trimline	Engine/transmission	Fuel type	Combined CO <sub>2</sub> emissions g/km <sup>1</sup>	Basic exc. VAT & VRT	Total inc. VAT & VRT
Grand California 600	2.0TDI 177PS FWD 8-speed automatic 3.5T	Diesel	298	€73,593.00	€102,830.00

***Volkswagen Commercial Vehicles may change RRP's at any time (this includes where there are government changes in regulation and/or legislation). There may be a delay to any RRP displaying correctly on our materials. Always obtain prices from your chosen authorised Tour Centre.***

1 Figures shown are for comparability purposes; only compare fuel consumption and CO<sub>2</sub> figures with other vehicles tested to the same technical procedures. These figures may not reflect real life driving results, which will depend upon a number of factors including the accessories fitted (post-registration), variations in weather, driving styles and vehicle load. Data correct at 11.7.2022. Figures quoted are for a range of configurations (including non-UK) and are subject to change due to ongoing approvals/changes. Please consult your authorised Volkswagen California Centre for further information.

# The Grand California

This brochure supersedes all previous publications.

Issue: 06/02/2024

[www.volkswagenvans.ie](http://www.volkswagenvans.ie)

Please note: Screen technology does not allow exact reproduction of the paint and upholstery colours. Some of the vehicles shown are European specification and may be fitted with optional equipment or accessories that are available at extra cost, or do not reflect current specification. All data and specifications are in accordance with information available at the time of publication and are subject to change without notice. Vehicles not currently in Ireland stock and customer order vehicles may take a number of weeks for delivery. Certain combinations of vehicle specifications and factory-fitted options are not compatible and therefore all orders received are subject to confirmation. Models, factory fitted-options and paint and upholstery options are subject to availability. Please check details and availability with an authorised Volkswagen California Centre at the time of ordering.