

# Towing Equipment



Commercial  
Vehicles

# Chevrons



## Caddy

Twin Rear Doors (No Windows)	VCHE30
---------------------------------	--------

Twin Rear Doors (Full Rear)	VCHE31
--------------------------------	--------

Tailgate (No Windows)	VCHE32
--------------------------	--------

Tailgate (Full Rear)	VCHE33
-------------------------	--------



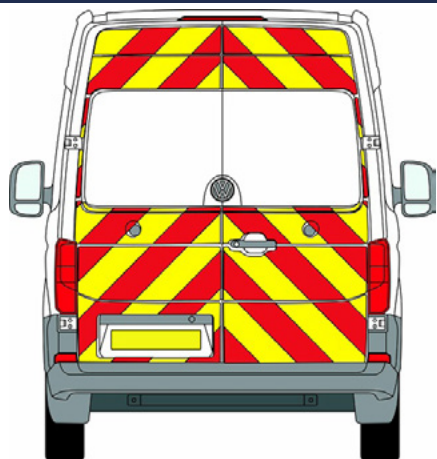
## Transporter

Twin Rear Doors (No Windows)	VCHE34
---------------------------------	--------

Twin Rear Doors (Full Rear)	VCHE35
--------------------------------	--------

Tailgate (No Windows)	VCHE36
--------------------------	--------

Tailgate (Full Rear)	VCHE37
-------------------------	--------



## Crafter

H1 Twin Rear Doors (No Windows)	VCHE38
------------------------------------	--------

H1 Twin Rear Doors (Full Rear)	VCHE39
-----------------------------------	--------

H2 Twin Rear Doors (No Windows)	VCHE40
------------------------------------	--------

H2 Twin Rear Doors (Full Rear)	VCHE41
-----------------------------------	--------

# Emergency and Interior Lighting



## LED Repeaters

R65 LED Warning Light (Amber)	D441-00
R65 LED Warning Light (Red)	D441-05
R65 LED Warning Light (White)	D441-07
R65 LED Warning Light (Red/Amber)	D441-15



## Work Lamps

12 Volt Work Lamp (1750 Lumens)	D420-46
12 Volt Work Lamp (2150 Lumens)	D420-34

## Inverters

600 Watt Sine Wave Inverter	D857-60
1500 Watt Sine Wave Inverter	D857-16



## Lightbar

300mm LED beacon single bolt	D443-60
300mm LED beacon magnetic	D443-65
600mm LED Light Bar	D443-40
900MM LED Light Bar	D443-41
1200mm LED Light Bar	D443-42



## Interior LED Lights

60cm Long LED	ALL00001
100cm Long LED	ALL00002

# Tool Security and Ventilation



## Cargo Area Ventilation

Flettner Roof Vent Slimline	VVEN08
-----------------------------	--------

Slimline Adaptor (Black)	VVEN09
--------------------------	--------

Roof Vent	VVEN06
-----------	--------



## Rear Parking Sensors

22MM Rear Park Sensors (Black)	COBR0294
--------------------------------	----------

## Reversing Alarm

Audible warning Rev Alarm	EC520-004
---------------------------	-----------



## Armorgard

Tuffbank 980x540x475 ExDim	TB1
----------------------------	-----

Tuffbank 1275x515x450 Ex Dim	TB12
------------------------------	------

Oxbox 810x478x380 Ex Dim	OX05
--------------------------	------

Oxbox 915x490x450 Ex Dim	OX1
--------------------------	-----

Transbank Chemical 880x485x540 Ex Dim	TRB4C
---------------------------------------	-------

# Slam Lock Cargo Area

## Parking Sensors and Reversing Cameras



### Locks 4Vans

Slam Locks 1 Slider Twin Rear (Caddy)	LocCaddy1
Slam Locks 2 Slider Twin Rear (Caddy)	LocCaddy2
Slam Locks 1 Slider Tail Gate (Caddy)	LocCaddy3
Slam Locks 2 Slider Tail Gate (Caddy)	LocCaddy4
Slam Locks 1 Slider Twin Rear (Trans.)	LocT6 - 1
Slam Locks 2 Slider Twin Rear (Trans.)	LocT6 - 2
Slam Locks 2 Slider Tail Gate (Trans.)	LocT6 - 3
Slam Locks 2 Slider Tail Gate (Trans.)	LocT6 - 4
Slam Locks 1 Slider Twin Rear (Crafter)	LocCrafter 1
Slam Locks 2 Slider Twin Rear (Crafter)	LocCrafter 2



\*\*\*Contact your local dealer  
for product information\*\*\*



\*\*\*Contact your local dealer  
for product information\*\*\*

# Hygiene Station and Loading Hoists



## Hygiene Station

Teal Sink	TPHMXG/12V
Towel Holder c/w towel	PC250E
Hand Cleaner 3ltr	Bar10612
Hand Cleaner Holder	Bar10621

## Loading Hoists



\*\*\*Contact your local dealer  
for product information\*\*\*

## Loading Hoists



\*\*\*Contact your local dealer  
for product information\*\*\*

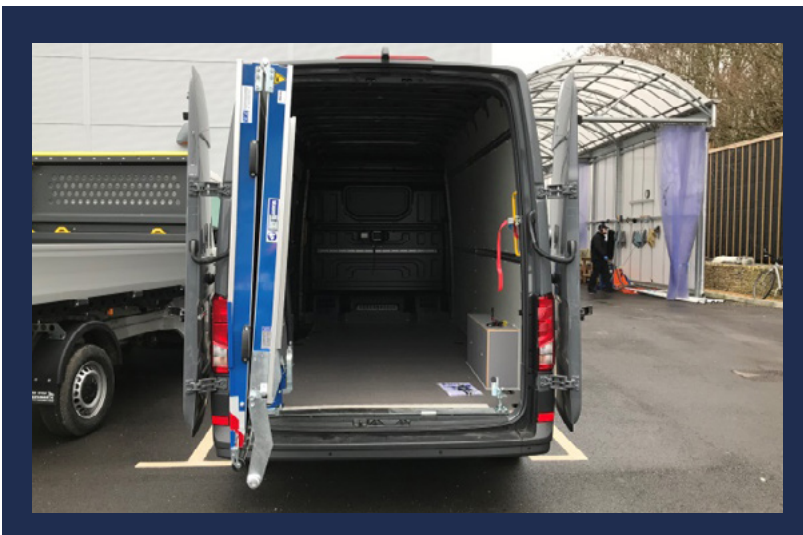
# Loading Ramps



\*\*\*Contact your local dealer  
for product information\*\*\*



\*\*\*Contact your local dealer  
for product information\*\*\*



\*\*\*Contact your local dealer  
for product information\*\*\*

# Ply Lining and Shelving

## Standard



\*\*\*Contact your local dealer  
for product information\*\*\*

## Shelving



\*\*\*Contact your local dealer  
for product information\*\*\*

\*\*\*Contact your local dealer  
for product information\*\*\*

## Shelving with Ladder Storage



\*\*\*Contact your local dealer for product information\*\*\*

## Wisa

