

Würth



Commercial  
Vehicles





# Volkswagen and Würth

## Vehicle equipment



**Due to the specific requirements of individual sectors and customers, the ideal vehicle equipment doesn't come "off the peg".**

Our task is to optimise the space in the vehicle to suit your work procedures. To this end, your sales specialist will advise you in detail and will look for the best possible solution to suit your individual needs.

We employ 3D planning to visualise your specifications precisely and unambiguously, and you get a clear picture of your future equipment solution. You can examine the implementation of the various solutions directly in our demonstration vehicles.

### **Maximum safety - Innovative environmental management**

For our vehicle equipment, that means:

- Crash test for all equipment lines
- Assured pull values for all rail systems
- Marking the loading weight in the drawers
- Floor panels made from sustainable raw materials
- Powder coating without solvent
- Tested products for securing loads
- Hazardous materials management also for vehicles
- Cost center management for the vehicle



**Top quality from our own development and production. There are several aspects to the quality of our vehicle equipment. Durability is one of these, ergonomics and efficient working procedures are others.**



**Safe storage and organization, many inserts and orderly sorting systems, along with the patented locking system for the drawers, make sure that your goods remain where they are supposed to be during transport.**

If you do have any questions one of our many sales representatives will gladly answer it.

## Level 1 – Basic Entry Level\*

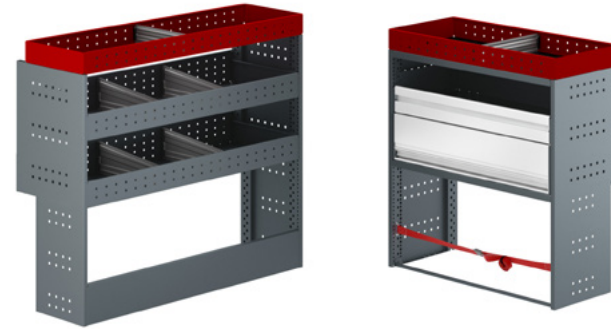
### Caddy

#### Consists of:

- Large shelves
- Drawers
- Storage compartment in base of racks

- Standard Caddy starter pack
- Two racks

**Part Number: WUR096399 823**



[Make an inquiry](#)

### Transporter

#### Consists of:

- Removable cases
- Shelf of lin bins
- Larger shelves
- Drawers
- Storage compartment in base of racks

- Standard Transporter starter pack
- Two racks

**Part Number: WUR096399 827**



[Make an inquiry](#)

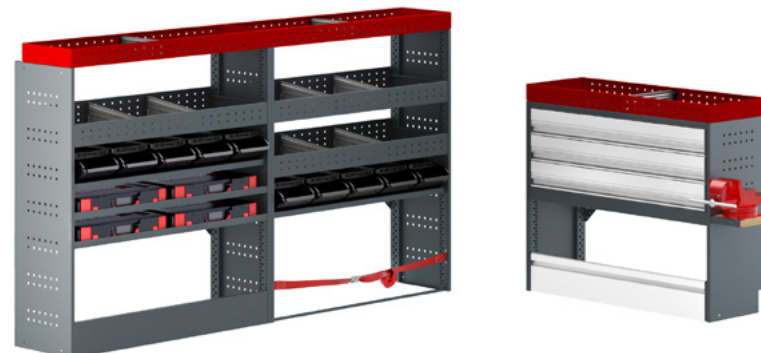
### Crafter

#### Consists of:

- Removable cases
- Multiple shelves of lin bins
- Larger shelves
- Drawers
- Pull-out workbench
- Storage compartment in base of racks

- Standard Crafter starter pack
- Two racks

**Part Number: WUR096399 831**



[Make an inquiry](#)

\*Each unit can be purchased individually.

## Level 2 – Modular Bespoke Systems\*

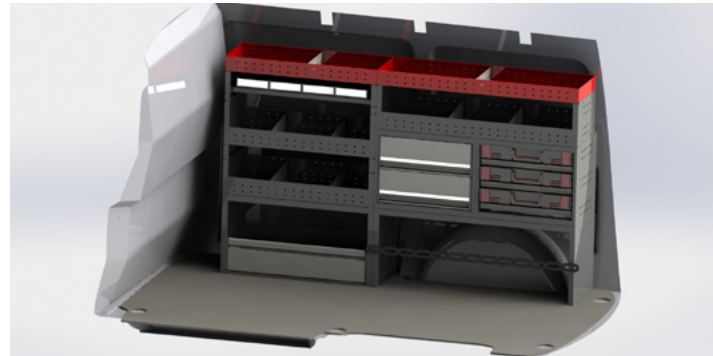
### Transporter SWB

#### Electrician

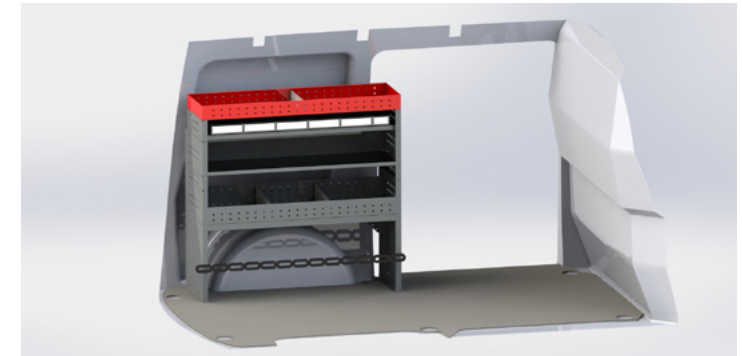
Removable cases for small electrical components. Small lin bins for storage in the van with labelling options. Shelving for parts.

**Part Number: GH2020040 101**

[Make an inquiry](#)



VW Transporter SWB Electrician - driver side



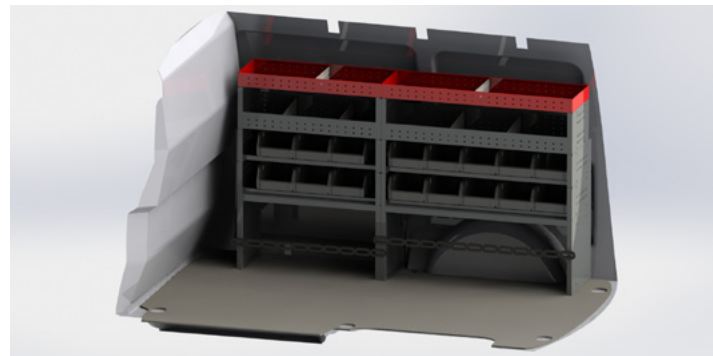
VW Transporter SWB Electrician - passenger side

#### Plumber

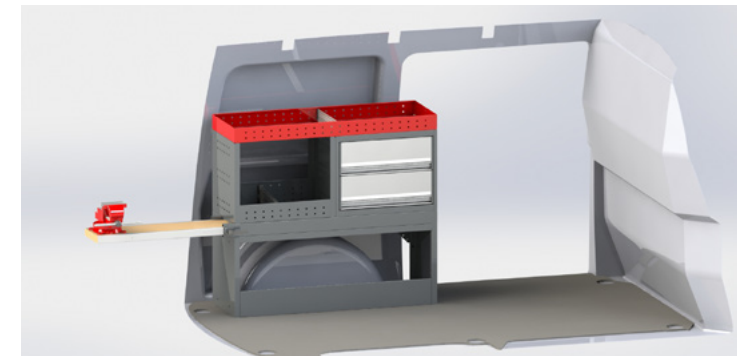
Large lin bins for storing plumbing parts. Slide out work bench for cutting pipe etc.

**Part Number: GH2020040 103**

[Make an inquiry](#)



VW Transporter SWB Plumber - driver side



VW Transporter SWB Plumber - passenger side

\*The modular vehicle equipment is adaptable so you can make alterations if needed.  
Each unit can be purchased individually.

## Level 2 – Modular Bespoke Systems

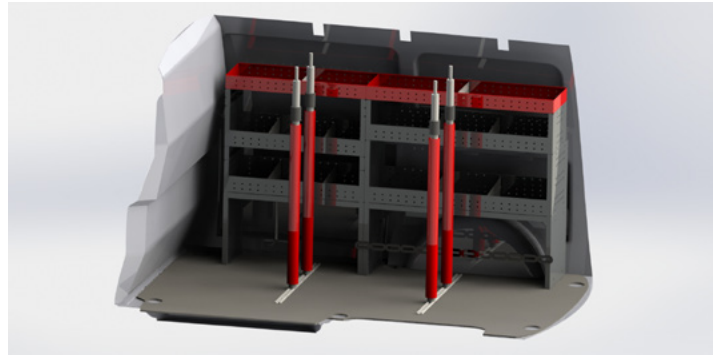
### Transporter SWB

#### Builder

Moveable clamping rods for plasterboard storage. Larger shelves for storage. Case holder in base unit for power tools. Open base units for bags of plaster etc.

**Part Number: GH2020040 105**

[Make an inquiry](#)



VW Transporter SWB Builder - driver side

#### Maintenance

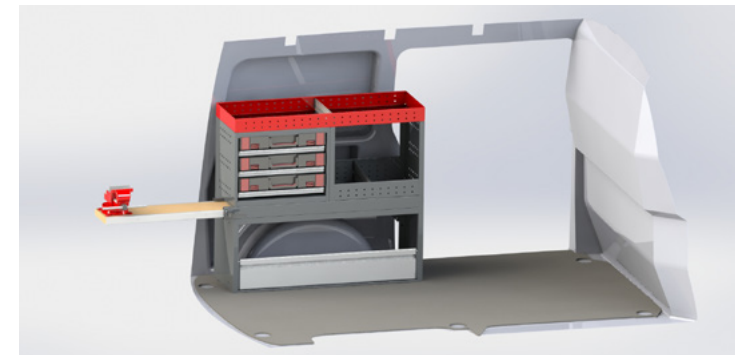
Drawers for tool storage. Slide out work bench. Height under units for compressor and 20 litre drums. Removable cases to carry components to the job.

**Part Number: GH2020040 104**

[Make an inquiry](#)



VW Transporter SWB Maintenance - driver side



VW Transporter SWB Maintenance - passenger side

## Level 2 – Modular Bespoke Systems

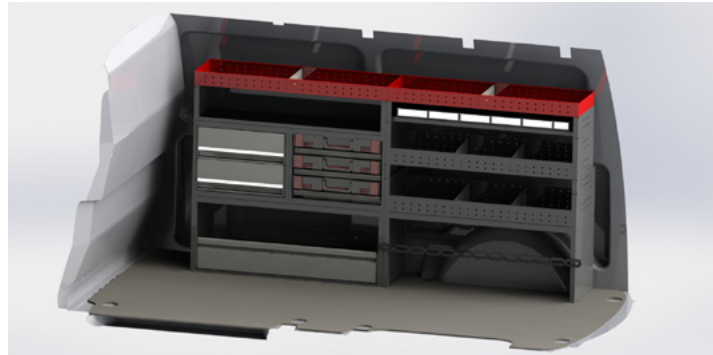
### Transporter LWB

#### Electrician

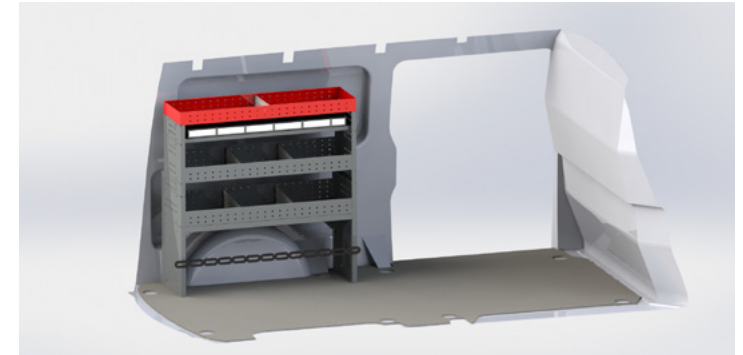
Removable cases for small electrical components. Small lin bins for storage in the van with labelling options. Shelving for parts.

**Part Number: GH2020040 106**

[Make an inquiry](#)



VW Transporter LWB Electrician - driver side



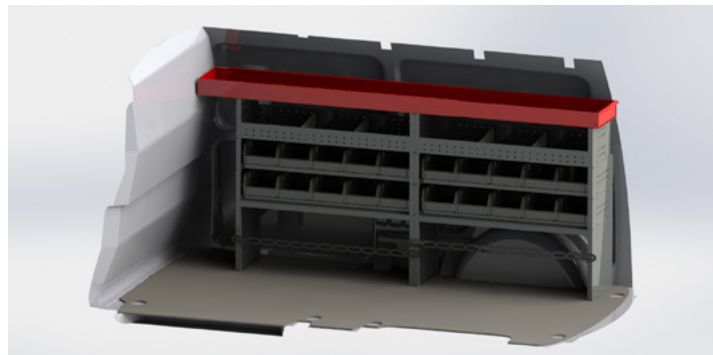
VW Transporter LWB Electrician - passenger side

#### Plumber

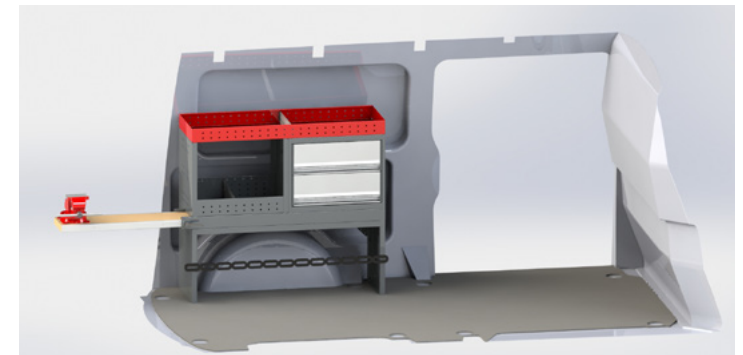
Large lin bins for storing plumbing parts. Slide out work bench for cutting pipe etc.

**Part Number: GH2020040 108**

[Make an inquiry](#)



VW Transporter LWB Plumber - driver side



VW Transporter LWB Plumber - passenger side



## Level 2 – Modular Bespoke Systems

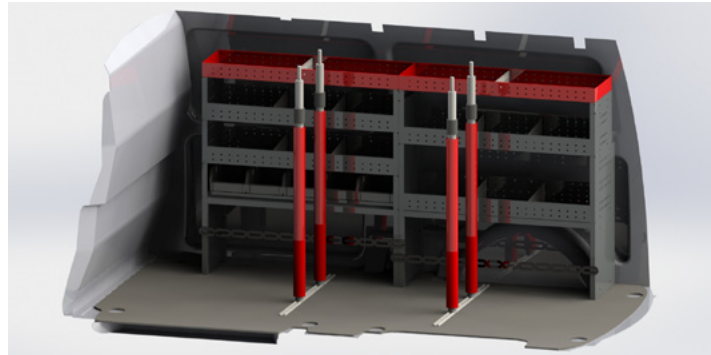
### Transporter LWB

#### Builder

Moveable clamping rods for plasterboard storage. Larger shelves for storage. Case holder in base unit for power tools. Open base units for bags of plaster etc.

**Part Number: GH2020040 110**

[Make an inquiry](#)



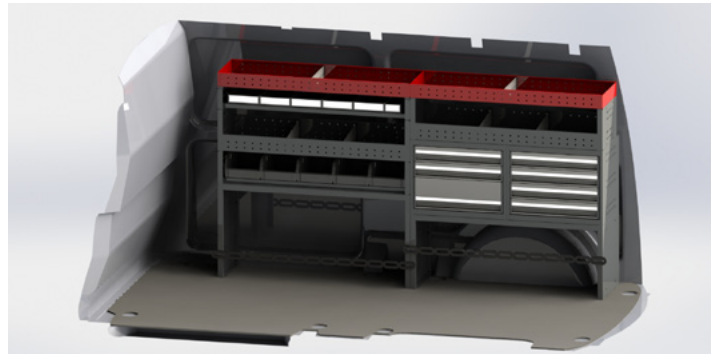
VW Transporter LWB Builder Build - driver side

#### Maintenance

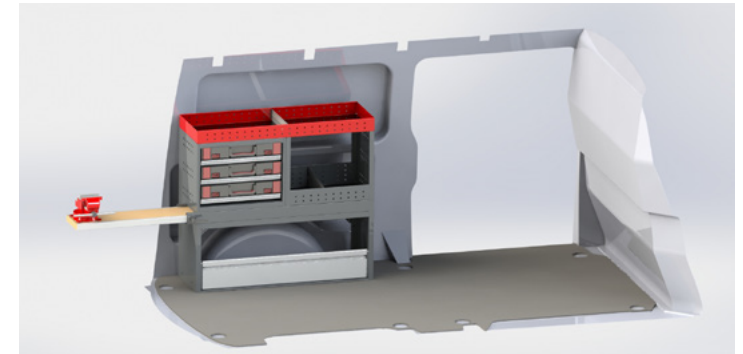
Drawers for tool storage. Slide out work bench. Height under units for compressor and 20 litre drums. Removable cases to carry components to the job.

**Part Number: GH2020040 109**

[Make an inquiry](#)



VW Transporter LWB Maintenance - driver side



VW Transporter LWB Maintenance - passenger side

## Level 2 – Modular Bespoke Systems

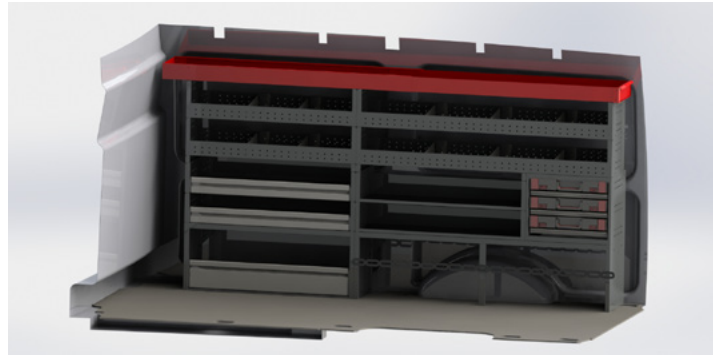
### Crafter MWB

#### Electrician

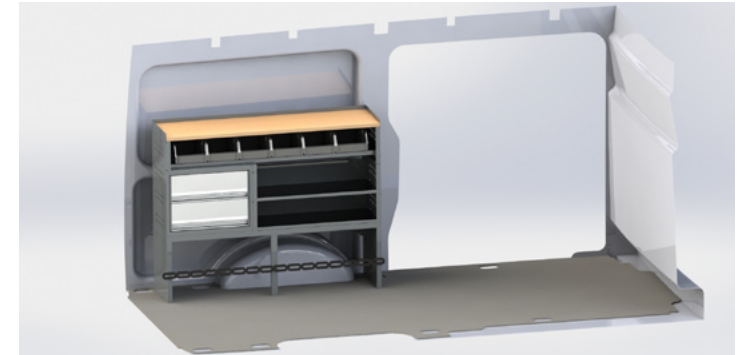
Long goods holder for pipes etc. and workbench. Removable cases for small electrical components. Small lin bins for storage in the van with labelling options. Shelving for parts.

**Part Number: GH2020040 111**

[Make an inquiry](#)



VW Crafter MWB Electrician - driver side



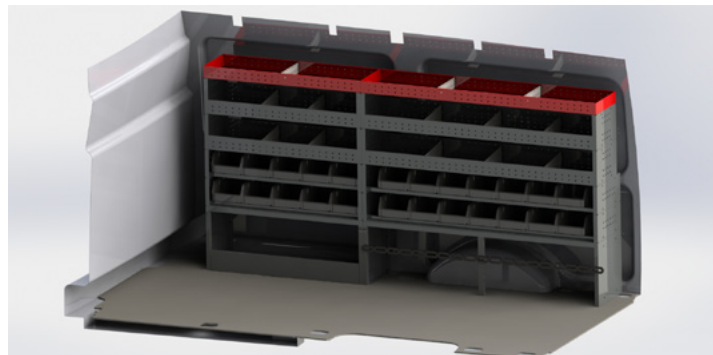
VW Crafter MWB Electrician - passenger side

#### Plumber

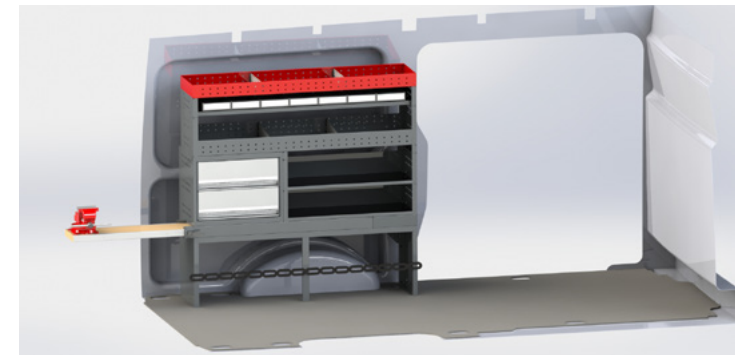
Large lin bins for storing plumbing parts. Slide out work bench for cutting pipe etc.

**Part Number: GH2020040 112**

[Make an inquiry](#)



VW Crafter MWB Plumber - driver side



VW Crafter MWB Plumber - passenger side



## Level 2 – Modular Bespoke Systems

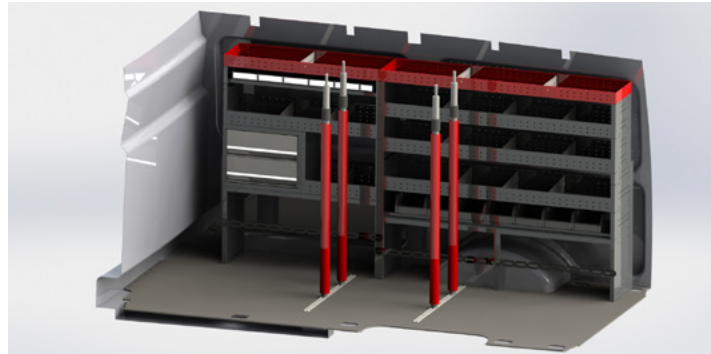
### Crafter MWB

#### Builder

Moveable clamping rods for plasterboard storage. Larger shelves for storage. Case holder in base unit for power tools. Open base units for bags of plaster etc.

**Part Number: GH2020040 204**

[Make an inquiry](#)



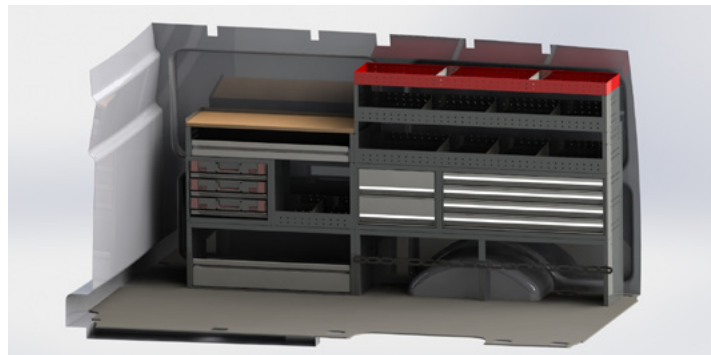
VW Crafter MWB Builder - driver side

#### Maintenance

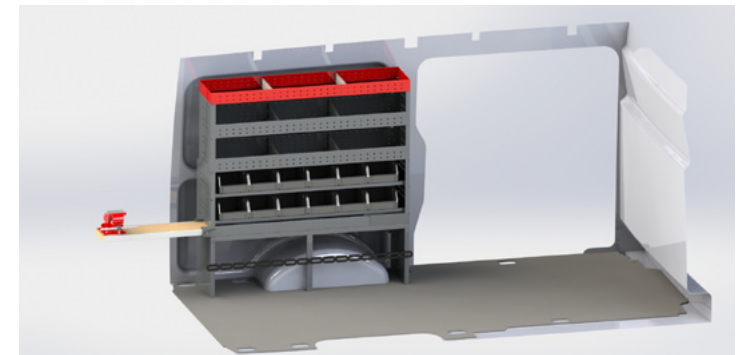
Extra workbench inside the van. Drawers for tool storage. Slide out work bench. Height under units for compressor and 20 ltr drums. Removable cases to carry components to the job.

**Part Number: GH2020040 201**

[Make an inquiry](#)



VW Crafter MWB Maintenance - driver side



VW Crafter MWB Maintenance - passenger side

## Level 2 – Modular Bespoke Systems

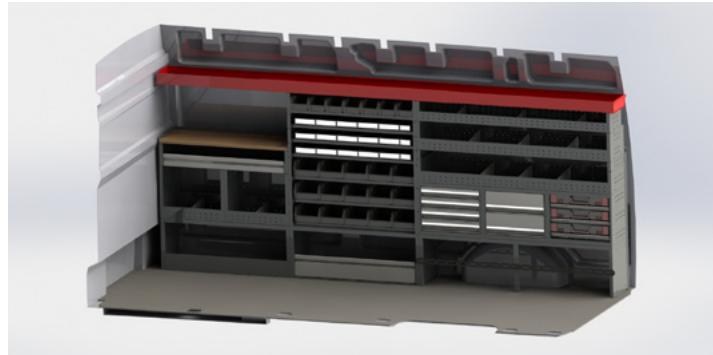
### Crafter LWB

#### Electrician

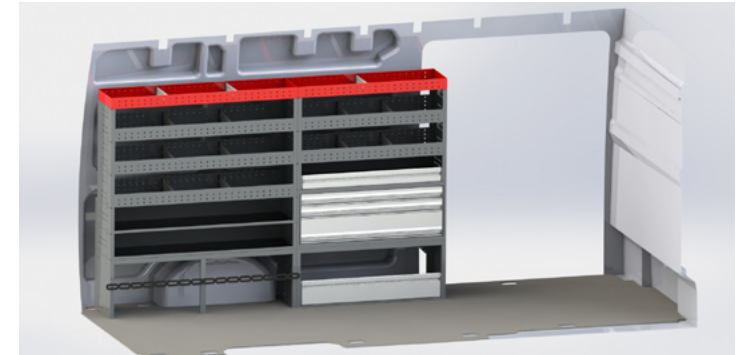
Long goods holder for pipes etc. and workbench. Removable cases for small electrical components. Small bin bins for storage in the van with labelling options. Shelving for parts.

**Part Number: GH2020040 205**

[Make an inquiry](#)



VW Crafter LWB Electrician - driver side



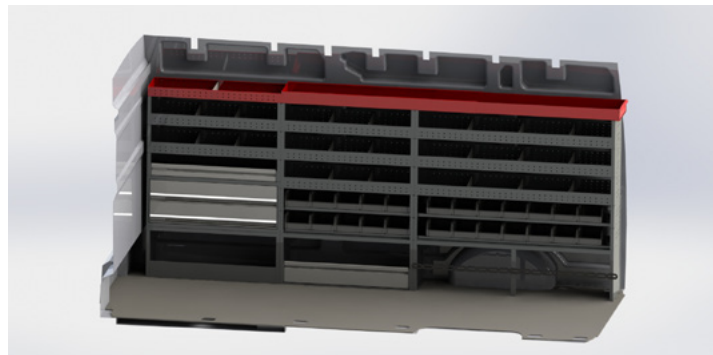
VW Crafter LWB Electrician - passenger side

#### Plumber

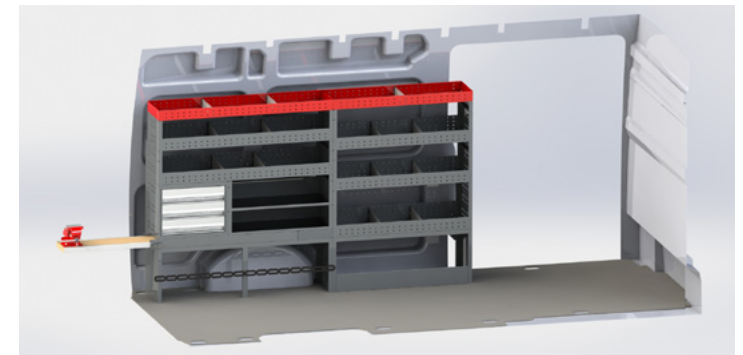
Large bin bins for storing plumbing parts. Slide out work bench for cutting pipe etc.

**Part Number: GH2020040 301**

[Make an inquiry](#)



VW Crafter LWB Plumber - driver side



VW Crafter LWB Plumber - passenger side

## Level 2 – Modular Bespoke Systems

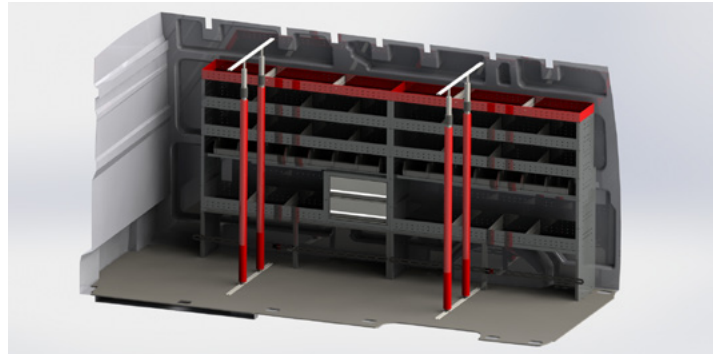
### Crafter LWB

#### Builder

Moveable clamping rods for plasterboard storage. Larger shelves for storage. Case holder in base unit for power tools. Open base units for bags of plaster etc.

**Part Number: GH2020040 602**

[Make an inquiry](#)



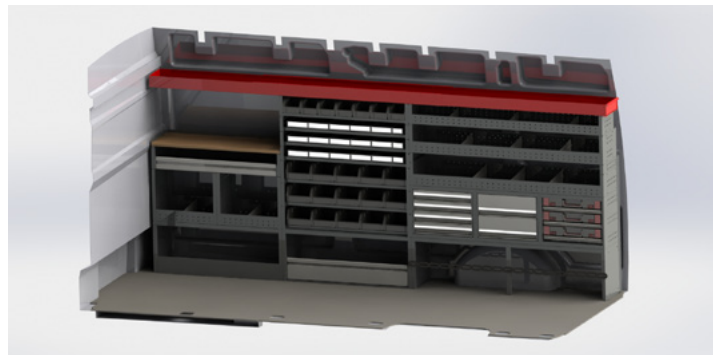
VW Crafter LWB Builder - driver side

#### Maintenance

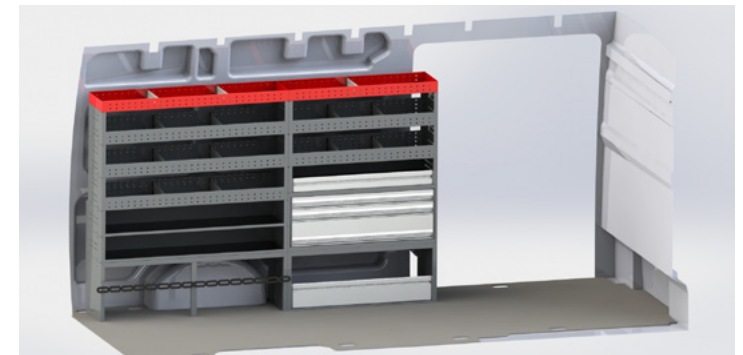
Extra workbench inside the van. Drawers for tool storage. Slide out work bench. Height under units for compressor and 20 ltr drums. Removable cases to carry components to the job.

**Part Number: GH2020040 303**

[Make an inquiry](#)



VW Crafter LWB Plumber - driver side



VW Crafter LWB Plumber - passenger side





We reserve the right to make product changes at any time that we feel provide a quality improvement, even without prior announcement or notification.

Illustrations may be example illustrations that may differ in appearance from the goods supplied. Errors excepted.

We do not assume liability for printing errors.

Our general terms and conditions apply.



**Commercial  
Vehicles**